

## Rough-In Guide for Solid Lumber Joists

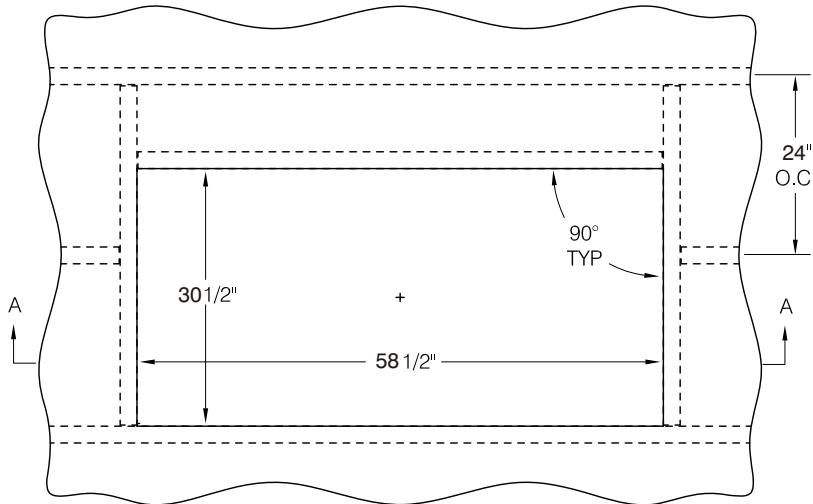
**Applicable Product Models:**  
32, 32H, 32HX, 32W, 32WH, 32WHX

Page 1 of 2

### Roughing-In Notes:

Tolerance for opening dimensions is +1/4" (6mm), -0" (-0mm). The opening must be square and the side walls perpendicular. Maximum joist height is 18" tall. See specification sheet for maximum floor-to-floor height of specific models. For detailed framing suggestions, see the [Versa Lift Installation Guide](#).

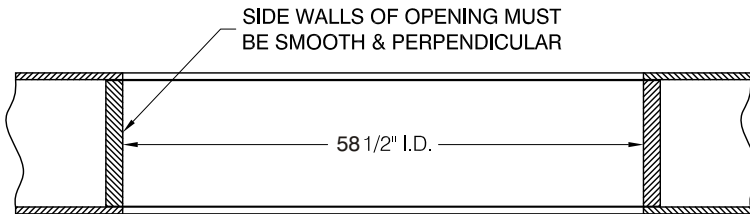
### TYPICAL FRAMING FOR 24" O.C. SOLID JOISTS



CAD: 32RUFN-24-PLAN.DWG

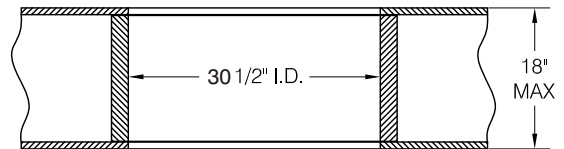
### IMPORTANT NOTE:

The required finished opening is 30.5 x 58.5" with smooth sidewalls. Whenever joist hanger brackets are used to frame the opening, they must be covered to prevent interference with the lifting platform operation. 2 x 2" "L" shaped flashing strips (4) are provided by BPG to cover hanger brackets and nail head in the corners of the lift opening.



CAD: 32RUFN-FRT-X.DWG

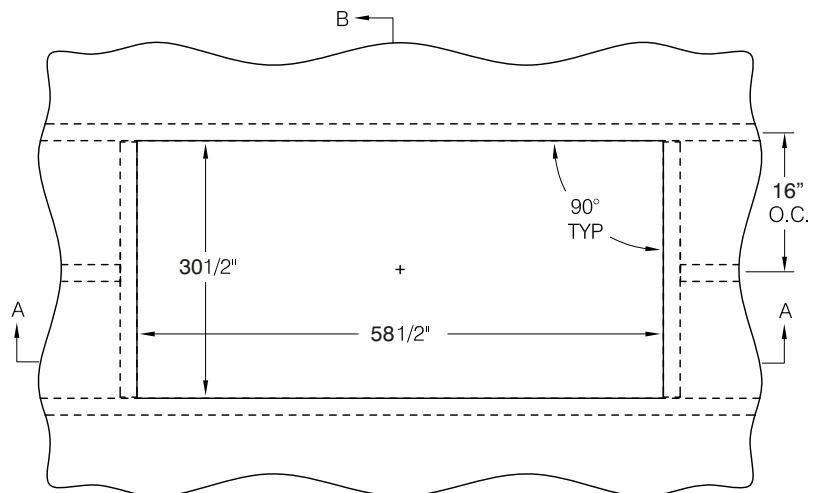
SEC. A-A



CAD: 32RUFN-SIDE-X.DWG

SEC. B-B

### TYPICAL FRAMING FOR 16" O.C. SOLID JOISTS



CAD: 32RUFN-16-PLAN.DWG

### IMPORTANT NOTE:

The required finished opening is 30.5 x 58.5" with smooth sidewalls. Whenever joist hanger brackets are used to frame the opening, they must be covered to prevent interference with the lifting platform operation. 2 x 2" "L" shaped flashing strips (4) are provided by BPG to cover hanger brackets and nail head in the corners of the lift opening.

# BPG

Byers Products Group

P. O. Box 270366  
OK City, OK 73137  
Ph: 405-491-8550  
Fax: 405-491-0180  
[www.bpghome.com](http://www.bpghome.com)

## Rough-In Guide for Fabricated "I-Joists"

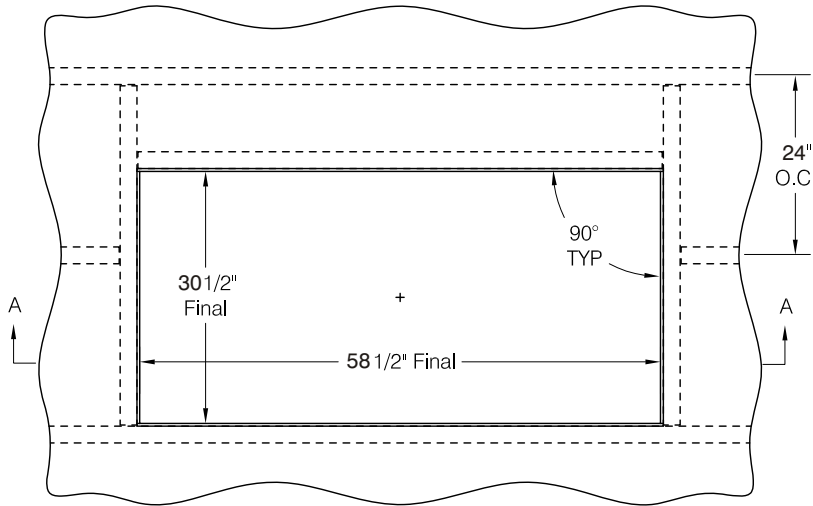
**Applicable Product Models:**  
32, 32H, 32HX, 32W, 32WH, 32WHX

Page 2 of 2

### Roughing-In Notes:

For I-Joists, frame the opening 1/2" larger in each dimension, then skin the side walls with 1/4" plywood for a smooth opening. Tolerance for opening dimensions is +1/4" (6mm), -0" (-0mm). The opening must be square and the side walls perpendicular. Maximum joist height is 18" tall. See specification sheet for maximum floor-to-floor height of specific models. For detailed framing suggestions, see the **Versa Lift Installation Guide**.

**TYPICAL FRAMING FOR  
24" O.C. Fabricated I-JOISTS**

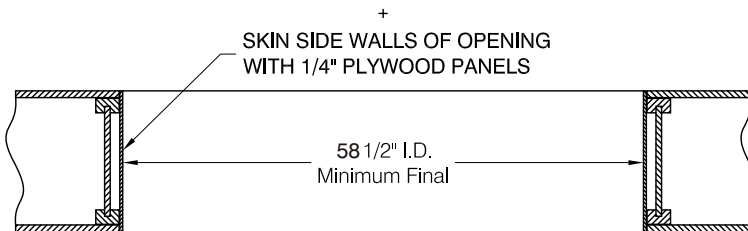


CAD: 32RUFN-16-I-PLAN1.DWG

-OR-

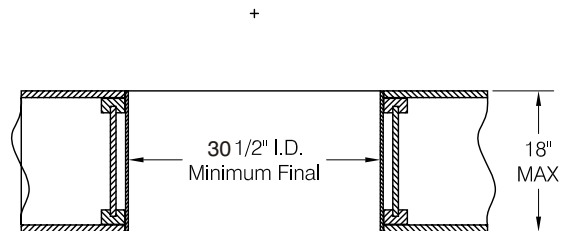
CAD: 32RUFN-16-I-PLAN2.DWG

**Note: For I-Joists, frame opening 31" x 59", then skin inside with 1/4" plywood to make the final opening size 30.5" x 58.5" with smooth side walls.**



CAD: 32RUFN-I-FRT-X.DWG

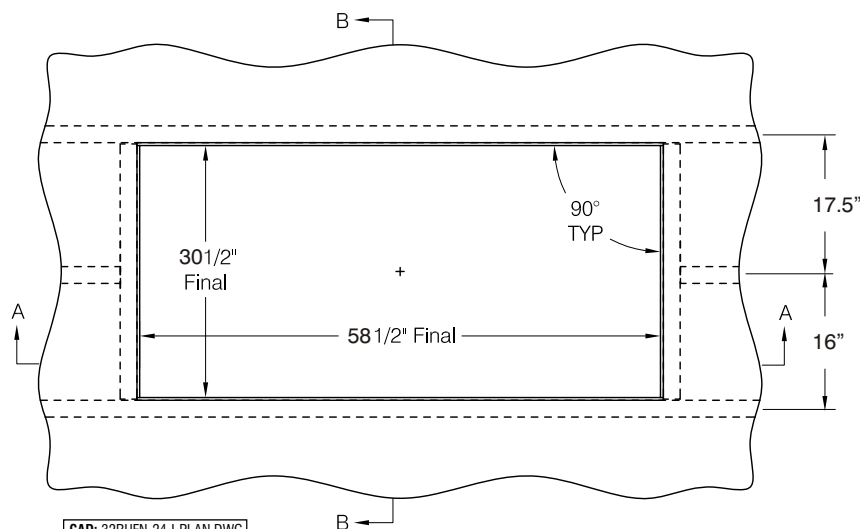
SEC. A-A



CAD: 32RUFN-I-SIDE-X.DWG

SEC. B-B

**TYPICAL FRAMING FOR  
16" O.C. Fabricated I-JOISTS**



CAD: 32RUFN-24-I-PLAN.DWG

**Note: For I-Joists, frame opening 31" x 59", then skin inside with 1/4" plywood to make the final opening size 30.5" x 58.5" with smooth side walls.**

**Important: To get the required 31" x 59" opening, one I-Joist must be shifted 1 1/2" off-center - or - you must cut two I-Joists and box in the opening using a stringer.**

# BPG

Byers Products Group

P. O. Box 270366  
OK City, OK 73137  
Ph: 405-491-8550  
Fax: 405-491-0180  
www.bpghome.com